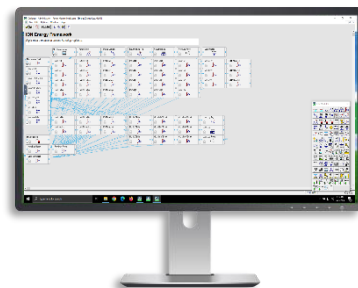


# EcoStruxure™ Power Monitoring Expert (PME)

## ION Architecture Programming using Designer (PMEIONPROG300)

### Description:

Formerly known as Advanced Programming, this 4-day Instructor-Led Factory Training course focuses on system and device level customization using the Designer Application in PME. Through a series of presentations and hands-on lab exercises, students will learn the architecture of ION meters, as well as how to create custom programs for equipment monitoring, alarming, and logging. They will also learn the Virtual ION Processor (VIP) for programming Modbus meters and 3<sup>rd</sup> party equipment. PME Designer and Vista graphics screens will also be covered, as well as an overview of how programs can be used in PME's graphic screens. Students will create multiple frameworks for integrating WAGES devices, control and process applications, logging, alarming, and custom calculations.



### Audience:

This course is intended for meter/instrumentation technicians, system engineers, and system integrators who need to learn how to get the most out of their PME software and associated meters.

### Course Details:

#### Duration:

- 4-Days

#### Delivery Options:

- Classroom (CR)
- Virtual Instructor-Led (VILT)

#### Product Numbers (SKUs):

- (CR) 3000PMU4DAY
- (VILT) 3000PMUWEB4DAY

### Prerequisites:

- Basic familiarity with PME
- Basic familiarity with Microsoft Windows operating systems
- Basic familiarity with power and energy topics & terms

### Students will be provided:

- Course material including presentations, labs, etc.
- Access to demo software & hardware
- Certificate of completion
- CEUs: 2.4

### Agenda:

Day 1	Day 2	Day 3	Day 4
ION Architecture & ION Modules	Vista & Designer Integration	Periodic Timer & Clock Modules	Digital I/O
Designer Navigation & Interface	Counter Module	Data Logging Framework	Modbus Clients
ION Meter Back-up & Restore	Arithmetic Module	Setpoint Modules	Controls

### Registration:

[Click here](#) to view available dates and to register for this course, or visit [pmutraining.com](http://pmutraining.com)

This course typically runs **Monday – Thursday, 9am – 4pm (CT)** unless otherwise noted during the registration process.

Question? Email [pmu@se.com](mailto:pmu@se.com)